

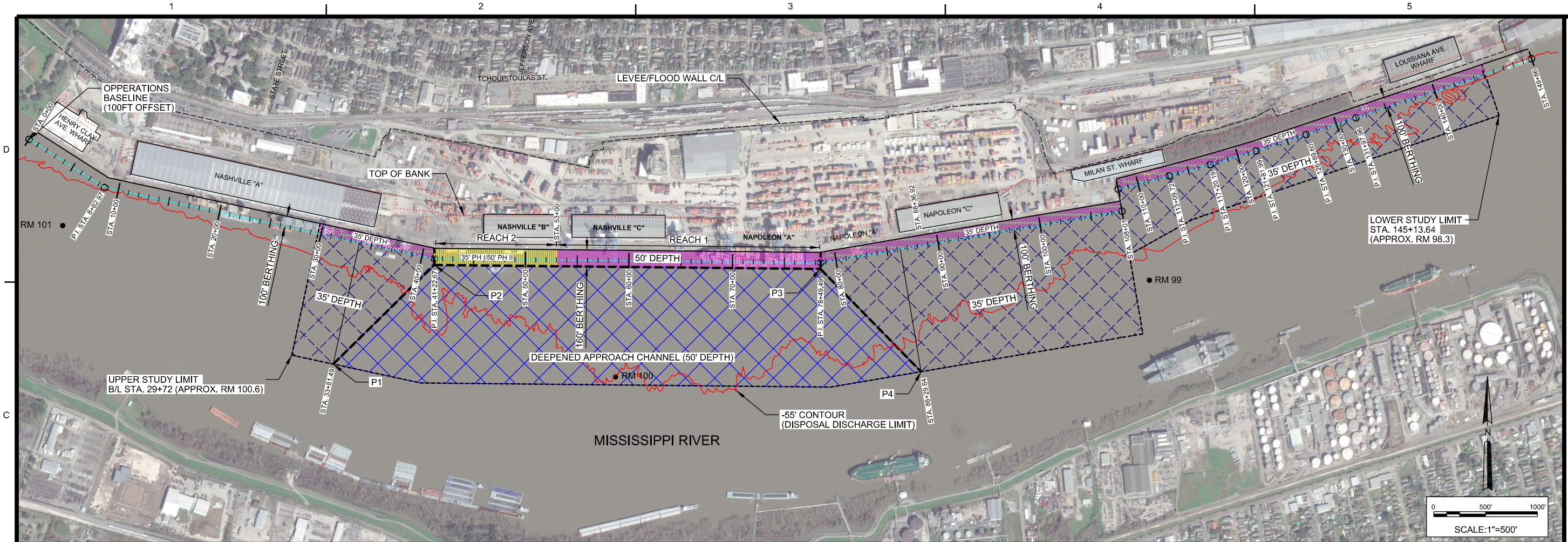
Port of New Orleans Deepening
Feasibility Study

Appendix A: Engineering

Annex 4

Alternative 4: 50 ft Depth Drawings

March 2020



 US Army Corps of Engineers NEW ORLEANS DISTRICT	
DATE	APPR
DESCRIPTION	MARK
DATE	APPR
DESCRIPTION	MARK
DATE	APPR
DESCRIPTION	MARK

BASELINE - 100' OFFSET		
STA.	EASTING	NORTHING
0+00	X 3661654.256	Y 516579.333
8+62.97	X 3662381.101	Y 516114.130
41+22.67	X 3665571.115	Y 515427.099
78+49.49	X 3669294.205	Y 515388.646
108+01	X 3672203.202	Y 515884.880
108+01	X 3672166.029	Y 516099.199
113+09.72	X 3672659.247	Y 516225.828
117+20.19	X 3673055.002	Y 516334.747
121+81.99	X 3673497.520	Y 516466.793
126+89.60	X 3673979.732	Y 516625.341
131+97.96	X 3674461.933	Y 516786.332
149+86.20	X 3676156.841	Y 517356.489

STUDY LIMITS		
STA.	EASTING	NORTHING
29+72	X 3664442.760	Y 515669.643
145+13.64	X 3675708.941	Y 517205.818

DEEPENED APPROACH CHANNEL LIMITS		
45° ANGLE	STA.	ACTUAL POINT COORDINATE
UPSTREAM APPROACH	41+22.67	P1: X 3664590.309 Y 514410.259
	41+22.67	P2: X 3665566.962 Y 515367.138
DOWNSTREAM APPROACH	78+49.49	P3: X 3669293.585 Y 515328.649
	145+13.64	P4: X 3670265.037 Y 514336.922

SHEET LEGEND

- AUTHORIZED STUDY LIMITS
- OPERATION'S BASELINE, 100FT OFFSET FROM FACE OF WHARF
- DEEPENED APPROACH CHANNEL LIMITS
- TOP OF BANK (APPROXIMATE)
- LEVEE/FLOOD WALL C/L

- USACE - APPROACH CHANNEL (DEEPENED TO 50' DEPTH)
- USACE - APPROACH CHANNEL (REMAINING STUDY LIMITS, 35' DEPTH)
- PONO - 160' WIDE BERTHING AREA REACH 1 (50' DEPTH PHASE I)
- PONO - 160' WIDE BERTHING AREA REACH 2 (35' DEPTH PHASE I - 50' DEPTH PHASE II)
- PONO - 100' WIDE BERTHING (REMAINING STUDY LIMITS, 35' DEPTH)

- BASELINE PI.
- RIVER MILE (RM)

ALTERNATIVE 2 - 50' DEEPENED APPROACH CHANNEL/35' DEPTH			
	LIMITS	USACE APPROACH CHANNEL	PORT BERTHING AREA
PHASE I	DEEPENED APPROACH CHANNEL LIMITS	50' DEPTH BELOW LWRP	50' DEPTH BELOW LWRP (REACH 1) 35' DEPTH BELOW LWRP (REACH 2)
	REMAINING STUDY LIMITS	35' DEPTH BELOW LWRP	35' DEPTH BELOW LWRP
PHASE II	DEEPENED APPROACH CHANNEL LIMITS	SAME AS PHASE I	50' DEPTH BELOW LWRP (REACH 2)
	REMAINING STUDY LIMITS	SAME AS PHASE I	SAME AS PHASE I

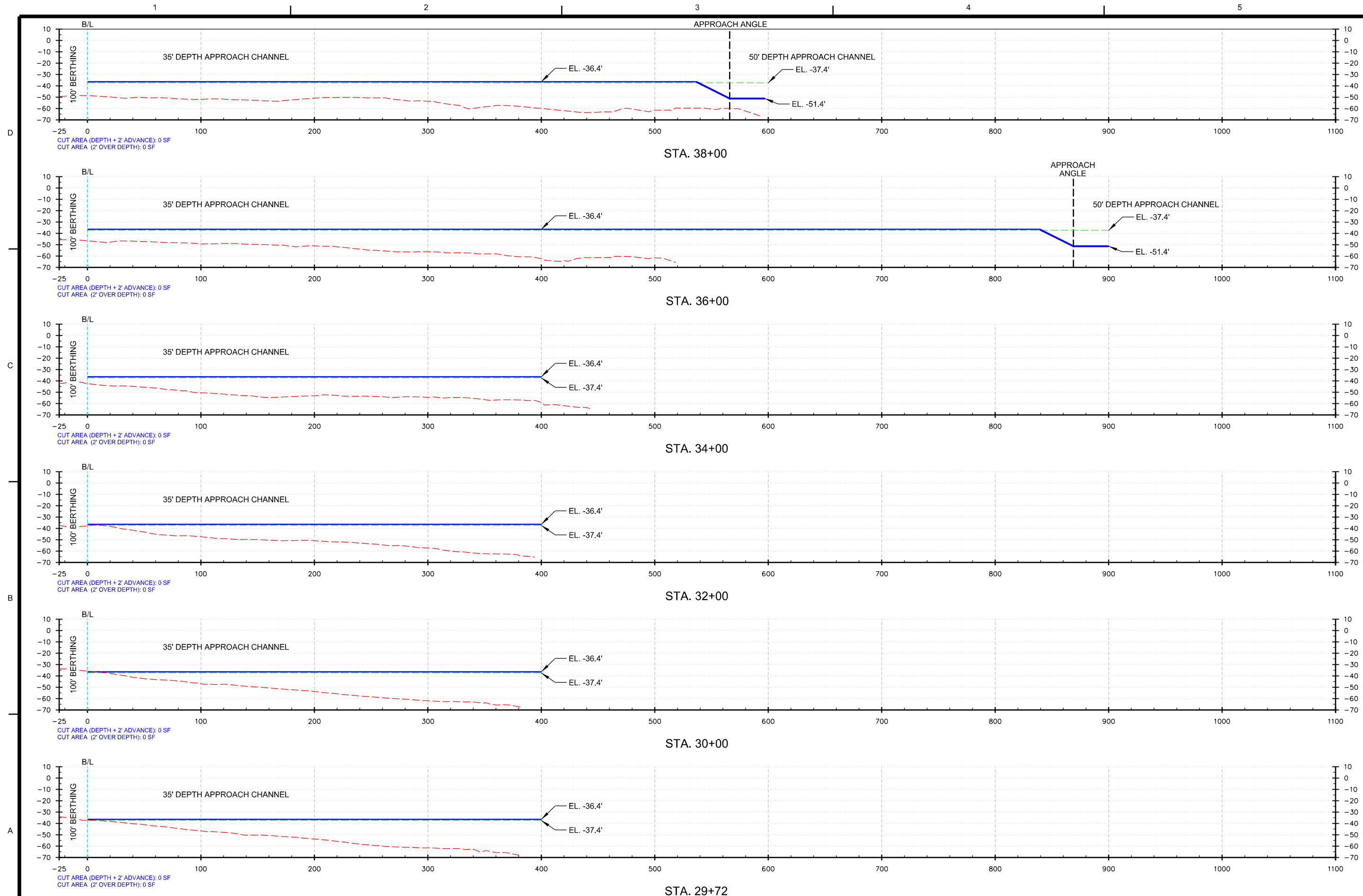
NOTES

ADVANCE DREDGING: ADDITIONAL 2' DEPTH.
 OVER DEPTH: ADDITIONAL 2' DEPTH.
 VERTICAL DATUM: NAVD88 (2009.55)
 DEPTH CONTROL: LOW WATER REFERENCE PLANE (LWRP)
 PHASE I TO PHASE II DURATION: ASSUME 5 YEARS
 PORT BERTHING CHANGE: 100' TO 160' WIDE BETWEEN STA. 41+22.67 TO STA. 78+49.49

DATE:	SOLICITATION NO.:
DESIGNED BY:	CONTRACT NO.:
DRAWN BY:	FILE NUMBER:
CHECKED BY:	ANSI SIZE:
APPROVED BY:	FILE NAME:

PORT OF NEW ORLEANS (PONO)
 DEEPENING FEASIBILITY STUDY,
 NEW ORLEANS PARISH, LA.
 ALTERNATIVE 4
 OVERALL PLAN

SHEET IDENTIFICATION
C-01



STA. 29+72
SHEET LEGEND

- EXISTING GRADE (06 AUG 2019 NAVD88)
- PROPOSED DEPTH + 2' ADVANCE (EL. -36.4' NAVD88/EL. -51.4' NAVD88)
- 2' OVER DEPTH (EL. -38.4' NAVD88/EL. -53.4' NAVD88)
- OPERATIONS MAINTENANCE GRADE (EL. -37.4' NAVD88)
- PROPOSED DEPTH CUT + 2' ADVANCE CUT (EL. -36.4' NAVD88/EL. -51.4' NAVD88)
- 2' OVER DEPTH CUT (EL. -38.4' NAVD88/EL. -53.4' NAVD88)

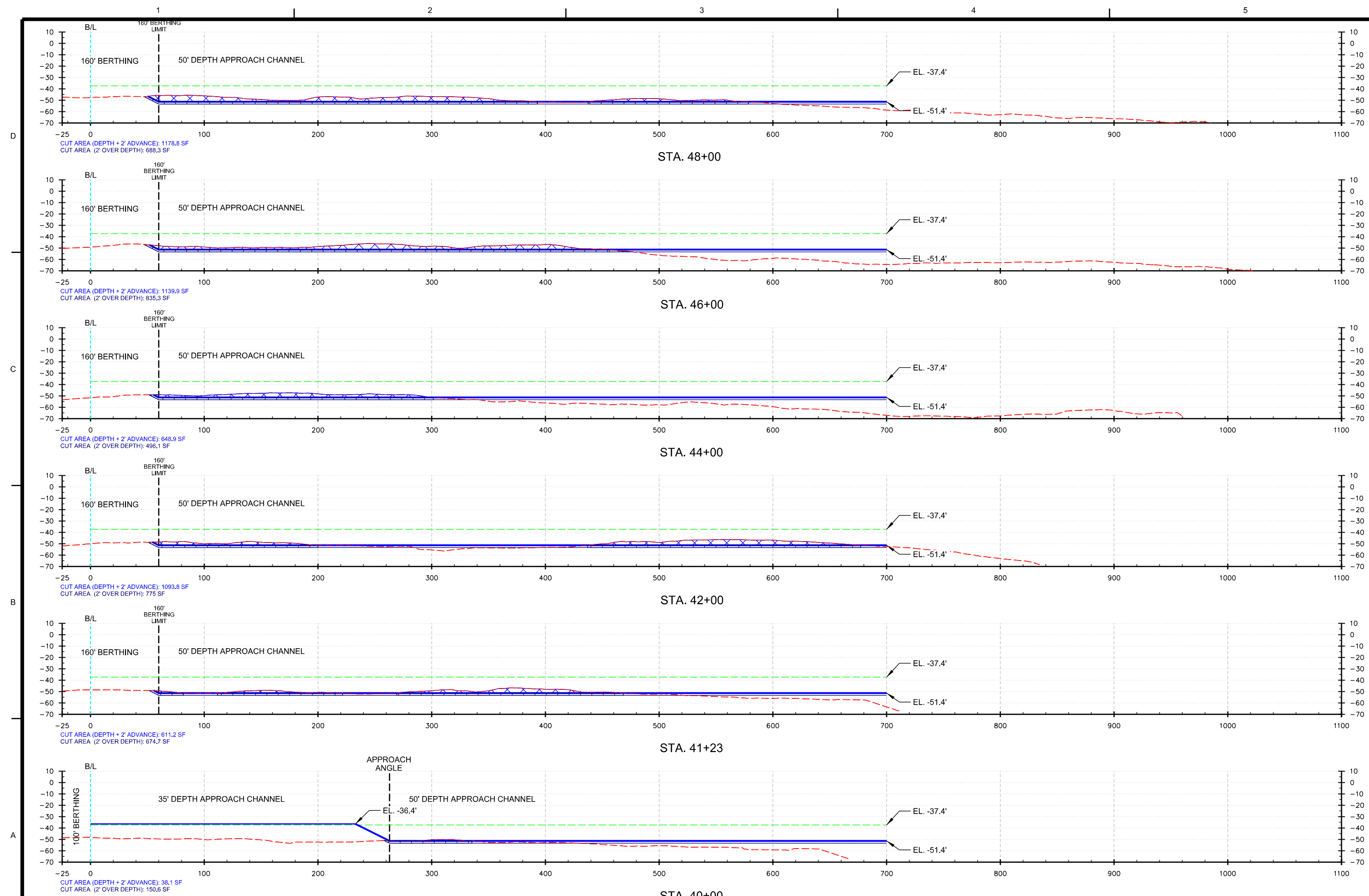


DATE	APPR	MARK	DESCRIPTION

DESIGNED BY: DANIEL BERRY	CHECKED BY: JAG	DATE: 01-10-2020	SOLICITATION NO.:
DRAWN BY: P.F.S.	APPROVED BY: P.F.S.	FILE NUMBER: 48621	CONTRACT NO.:
SUBMITTED BY: P.F.S.		FILE NAME:	
U.S. ARMY CORPS OF ENGINEERS NEW ORLEANS DISTRICT NEW ORLEANS, LOUISIANA			

PORT OF NEW ORLEANS (PONO)
DEEPENING FEASIBILITY STUDY,
NEW ORLEANS PARISH, LA.
ALTERNATIVE 4
USACE APPROACH CHANNEL,
CROSS SECTIONS,
STA. 29+72 TO STA. 38+00

SHEET IDENTIFICATION
C-03



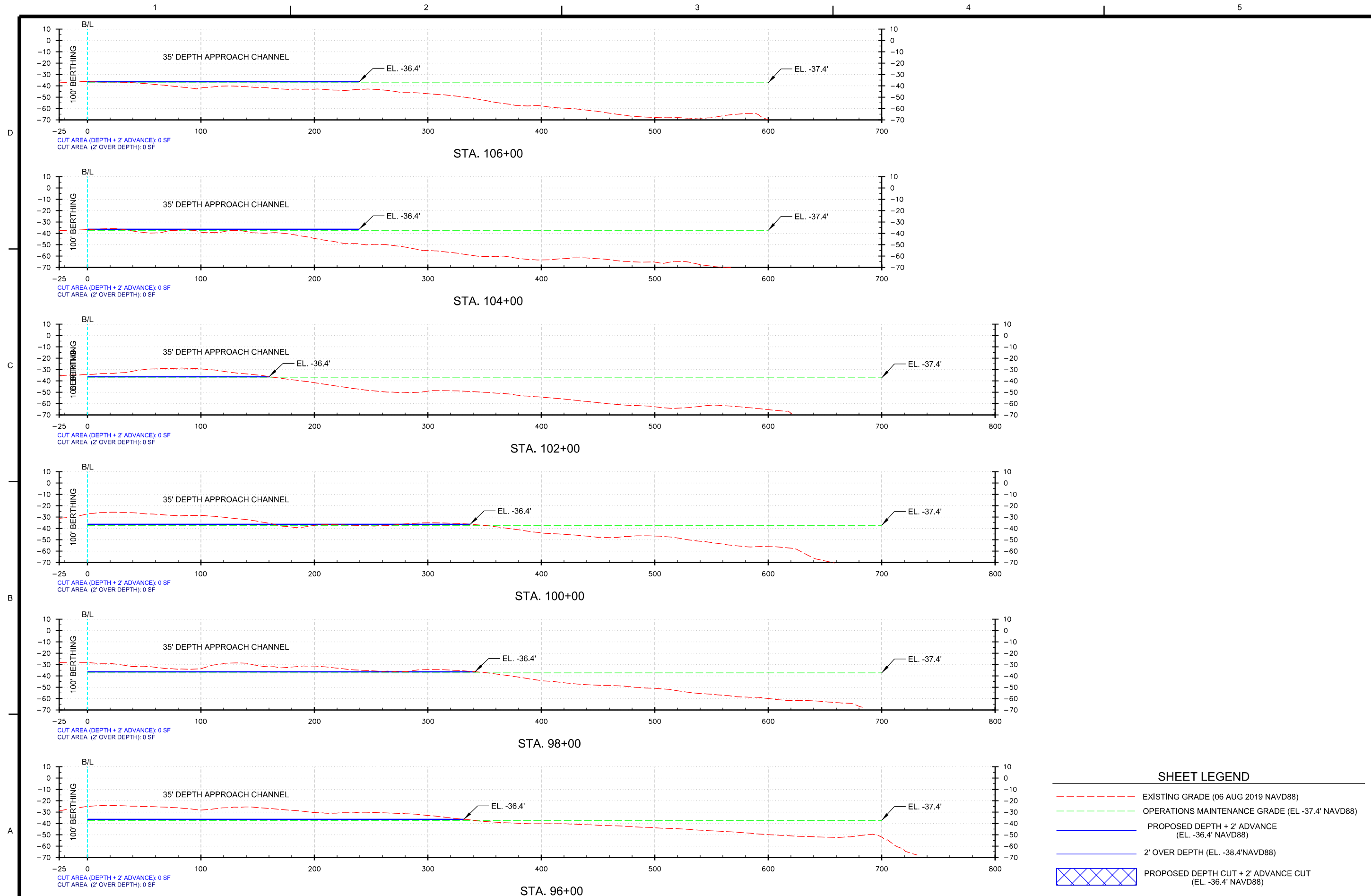
STA. 40+00
SHEET LEGEND

- EXISTING GRADE (06 AUG 2019 NAVD88)
- PROPOSED DEPTH + 2' ADVANCE (EL. -36.4' NAVD88/EL. -51.4' NAVD88)
- 2' OVER DEPTH (EL. -38.4' NAVD88/EL. -53.4' NAVD88)
- OPERATIONS MAINTENANCE GRADE (EL. -37.4' NAVD88)
- PROPOSED DEPTH CUT + 2' ADVANCE CUT (EL. -36.4' NAVD88/EL. -51.4' NAVD88)
- 2' OVER DEPTH CUT (EL. -38.4' NAVD88/EL. -53.4' NAVD88)

DATE	APPR	MARK	DESCRIPTION

DESIGNED BY: MARGARITA GREY	DATE:	SOLICITATION NO.:
DRAWN BY: J.A.B.	ISSUED BY: J.A.B.	CONTRACT NO.:
CHECKED BY: P.F.S.	APPROVED BY: P.F.S.	FILE NUMBER:
DATE:	DATE:	DATE:
01-10-2020	01-10-2020	01-10-2020
482.1	482.1	482.1
ANSI D	ANSI D	ANSI D

PORT OF NEW ORLEANS (PONO),
DEEPENING FEASIBILITY STUDY,
NEW ORLEANS PARISH, LA.
ALTERNATIVE 4
USACE APPROACH CHANNEL,
CROSS SECTIONS
STA. 40+00 TO STA. 48+00



SHEET LEGEND

- EXISTING GRADE (06 AUG 2019 NAVD88)
- OPERATIONS MAINTENANCE GRADE (EL -37.4' NAVD88)
- PROPOSED DEPTH + 2' ADVANCE (EL. -36.4' NAVD88)
- 2' OVER DEPTH (EL. -38.4' NAVD88)
- XXXXXX PROPOSED DEPTH CUT + 2' ADVANCE CUT (EL. -36.4' NAVD88)
- XXXXXX 2' OVER DEPTH CUT (EL. -38.4' NAVD88)



DATE	APPR	MARK	DESCRIPTION

DESIGNED BY: MARGARET BERRY	DATE:	SOLICITATION NO.:
DRAWN BY: P.F.S.	ISSUED BY: J.A.B.	CONTRACT NO.:
APPROVED BY: P.F.S.	DATE:	FILE NUMBER:
PROJECT NO.:	DATE:	FILE NAME:
SCALE:	DATE:	FILE NAME:
ANSI D:	DATE:	FILE NAME:

PORT OF NEW ORLEANS (PONO),
 DEEPENING FEASIBILITY STUDY,
 NEW ORLEANS PARISH, LA.
 ALTERNATIVE 4
 USACE APPROACH CHANNEL,
 CROSS SECTIONS
 STA. 96+00 TO STA. 106+00

SHEET IDENTIFICATION
C-09

